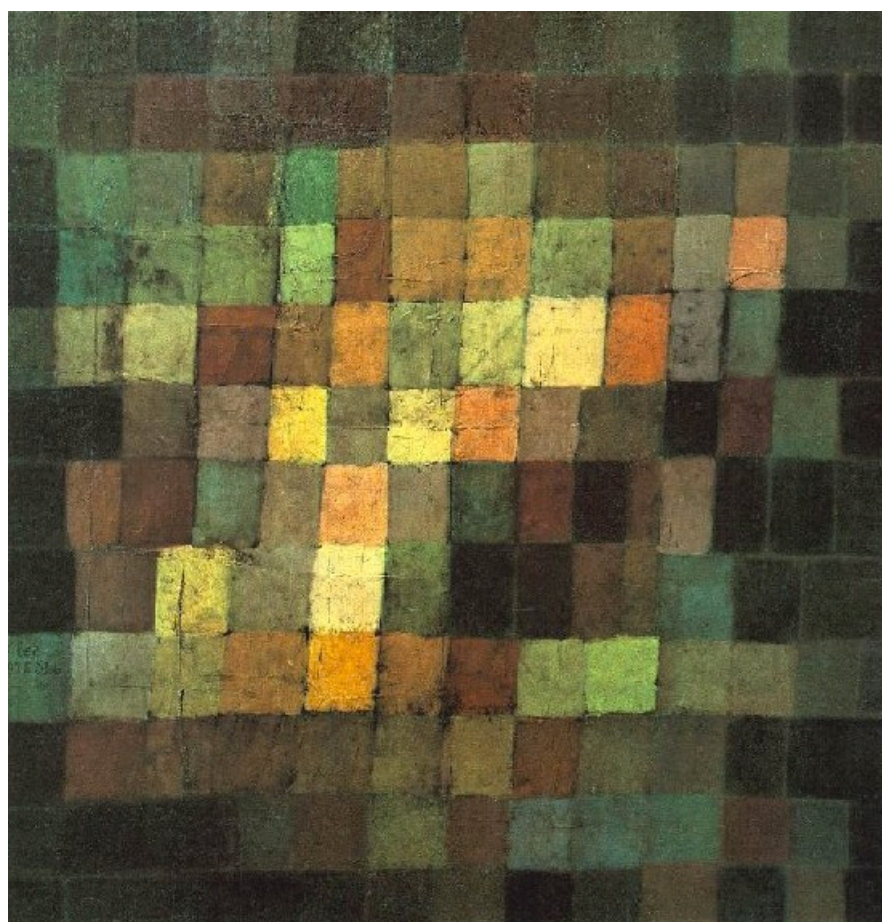


Paul Klee

Ancient Sound, Abstract in Black  
1925



# Ancient Sound Abstract in Black

Luis Hernández

$\text{♩} = 100$

**PIANO**

R.H. *mp* *mf* *mp*

PED. \*

**PNO.**

*mf*

**PNO.**

*p* *mf* *mf* *mf*

PED. \*

**PNO.**

R.H. *mp* *mf*

PED. \*

©

PNO.

15

*mp*

*mf*

Detailed description: This system contains measures 15 through 18. The treble clef part starts with a half note chord (F#4, A4, C#5) and continues with chords in the next three measures. The bass clef part features a rhythmic eighth-note pattern in measure 15, followed by quarter notes and eighth notes in measures 16-18. A crescendo hairpin is present in measure 15. Dynamics are marked *mp* and *mf*.

PNO.

19

*mp*

*p*

PED. \*

Detailed description: This system contains measures 19 through 22. The treble clef part has a half note chord in measure 19, followed by quarter notes and eighth notes. The bass clef part has a half note chord in measure 19, followed by quarter notes and eighth notes. Dynamics are marked *mp* and *p*. Pedal markings and asterisks are present.

PNO.

23

*p*

*mf*

PED. \*

Detailed description: This system contains measures 23 through 26. The treble clef part has eighth notes in measure 23, followed by quarter notes and eighth notes. The bass clef part has a half note chord in measure 23, followed by quarter notes and eighth notes. Dynamics are marked *p* and *mf*. Pedal markings and asterisks are present.

PNO.

27

*mf*

R.H.

PED. \*

Detailed description: This system contains measures 27 through 30. The treble clef part has eighth notes in measure 27, followed by quarter notes and eighth notes. The bass clef part has a half note chord in measure 27, followed by quarter notes and eighth notes. Dynamics are marked *mf*. Pedal markings and asterisks are present. The right hand (R.H.) is indicated in measure 29.

PNO.

30

*mp*

*p*

*mf*

*p*

*mp*

Ped. \*

Ped. \*

PNO.

33

*mf*

*mp*

Ped. \*

Ped. \*

Ped. \*

PNO.

36

*p*

*mp*

Ped. \*

Ped. \*

PNO.

39

*p*

*mp*

R.H.

8va-

Ped. \*