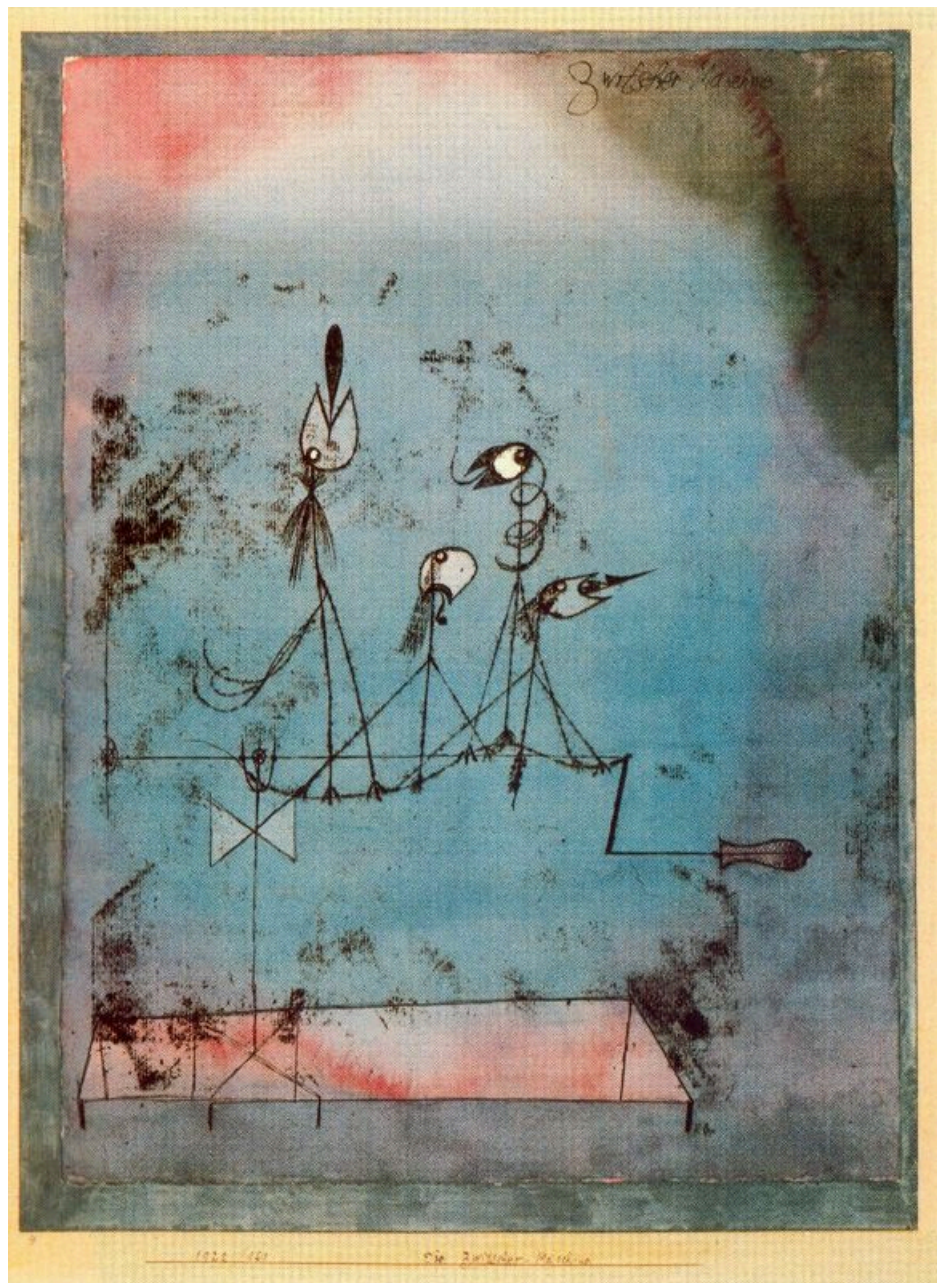


Paul Klee

Twittering Machine
1922



TWITTERING MACHINE

VIVACE (CA. ♩=128)

PIANO

mp

Ped. * Ped. * Ped. * Ped. *

PNO.

mf

Ped. *

PNO.

f

3 3 3 3 3

3

PNO.

mf

3

3

PNO.

18

10/4

10/4

Ped.

*

PNO.

23

10/4

7/4

10/4

7/4

mp

mf

mp

mf

PNO.

25

4/4

4/4

f

mf

PNO.

28

2/4

4/4

2/4

4/4

mp

mf

PNO.

32 *p*

10/4

10/4

Detailed description: This system contains measures 32 through 40. The treble clef part features chords in the first three measures, followed by a melodic line in the fourth measure. The bass clef part has a steady eighth-note accompaniment. The key signature has one flat (B-flat major or D minor). The time signature is 4/4. The dynamic marking is piano (*p*).

PNO.

36 *mp*

7/4 *mf*

10/4 *mp*

7/4 *mp*

Detailed description: This system contains measures 36 through 40. Measures 36-37 are in 4/4 time with a dynamic of mezzo-piano (*mp*). At measure 38, the time signature changes to 7/4 and the dynamic becomes mezzo-forte (*mf*). The bass clef part has a dynamic of *mp* in the 7/4 section. The key signature has one flat.

PNO.

38 *f*

3 *mf*

3

Detailed description: This system contains measures 38 through 40. The treble clef part has a dynamic of forte (*f*) in measure 38, then mezzo-forte (*mf*) in measures 39 and 40. The bass clef part has a dynamic of *mf*. There are triplet markings (3) in both staves in measures 39 and 40. The key signature has one flat.

PNO.

41 *mf*

2/4 *p*

4/4 *mf*

Detailed description: This system contains measures 41 through 45. Measures 41-43 are in 4/4 time with a dynamic of mezzo-forte (*mf*). At measure 44, the time signature changes to 2/4 and the dynamic becomes piano (*p*). At measure 45, the time signature returns to 4/4 and the dynamic becomes mezzo-forte (*mf*). The key signature has one flat.

PNO.

46

Musical score for piano, measures 46-49. The treble clef contains chords and eighth notes. The bass clef contains a melodic line with triplets and slurs.

PNO.

50

f

Musical score for piano, measures 50-53. The treble clef contains chords with triplets. The bass clef contains chords with triplets and slurs. A dynamic marking of *f* is present.

PNO.

54

mf

Musical score for piano, measures 54-57. The treble clef contains chords and eighth notes. The bass clef contains chords with triplets and slurs. A dynamic marking of *mf* is present.

PNO.

58

p

PED.

*

Musical score for piano, measures 58-61. The treble clef contains chords with slurs. The bass clef contains chords with slurs. A dynamic marking of *p* is present. A pedal marking (PED.) and an asterisk (*) are also present.