

October

Poem by Robert Frost

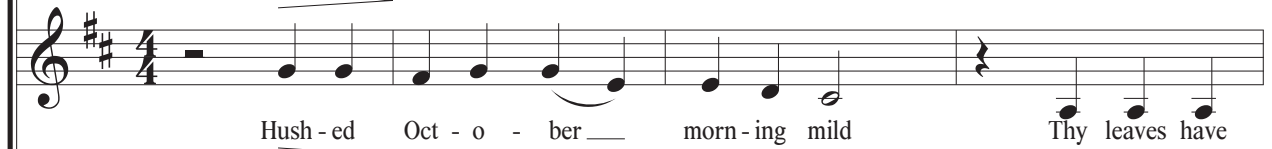
Izaak Thoms

 $\text{♩} = 80$

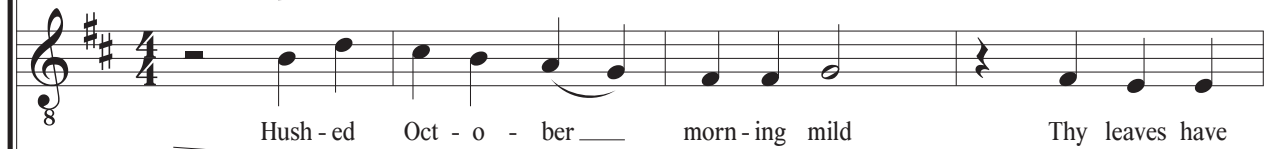
Soprano



Alto



Tenor



Bass



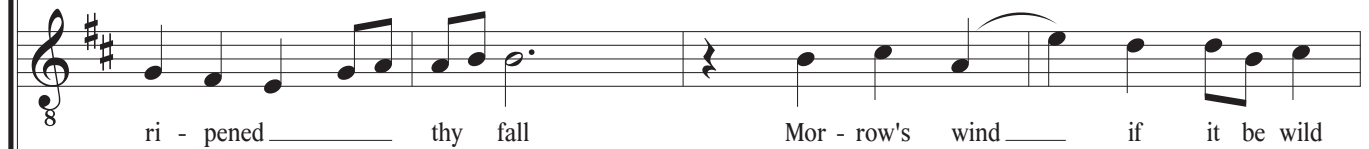
S



A



T



B



9

S Should waste them all — The crows a - bove the for - est call To - mor - row they may

A Should waste them all The crows a - bove the for - est call Mor - row they may

T 8 Should waste them all The crows a - bove the for - est call To - mor - row they may

B — all

Same as beginning

14

S form and go — Hush - ed Oct - o - ber — morn - ing mild —

A form and go — Hush - ed Oct - o - ber — morn - ing mild

T 8 form — and go — Hush - ed Oct - o - ber — morn - ing mild

B go O hush - ed Oct - o - ber morn - ing mild

19

S — Be - gin the hours of this day slow

A Be - gin the hours of this day slow

T 8 Be - gin the hours of this day slow Make the day seem to us less brief

B Be - gin the hours of this day slow make the day seem to us less brief

24

S not a - verse to be be - guil - ed Be - guile us in the way you know

A not a - verse to be be - guil - ed Be - guile us in the way you know

T 8 not a - verse to be be - guil - ed Be - guile us in the way you know —

B Hearths not a - verse to be be - guil - ed Be - guile us in the way you know

29

S Re - lease one leaf at the break of noon Re - lease a - no -

A Re - lease one leaf at the break of noon Re - lease a - no -

T 8 Re - lease one leaf at the break of noon Re - lease a - no -

B Re - lease one leaf at the break of day at noon Re - lease a - no -

34

S ther leaf one far a-way Re - tard the sun

A ther leaf on far a-way Re - tard the sun with gen-tle mist

T 8 ther leaf One from our trees one far a-way Re - tard the sun with gen-tle mist

B ther leaf one far a-way Re - tard the sun with gen-tle mist

39

S En - chant the land with am - y - thist Slow

A En - chant the land with am - y - thist Slow

T 8 En - chant the land with am - y - thist Slow

B En - chant the land with am - y - thist Slow

44

S Slow *f* for the grapes' sake if they were all

A Slow *f* for the grapes' sake if they were all

T 8 Slow *f* for the grapes' sake if they were all

B Slow *f* for the grapes' sake if they were all

49

S
whose leaves al - read - y are burnt with frost who's clus-tered fruit must else be lost

A
whose leaves al - read - y are burnt with frost who's clus-tered fruit must else be lost

T
8
whose leaves al - read - y are burnt with frost who's clus-tered fruit must else be lost

B
whose leaves al - read - y are burnt with frost who's clus-tered fruit must else be lost

54 *rit.*

S
for the grapes' _____ sake a - long the wall

A
for the grapes' _____ sake a - long the wall

T
8
for the grapes' _____ sake a - long the wall

B
for the grapes' _____ sake a - long the wall