

# Valse Quasi una Sonata

Waltz almost like a Sonata

Cheyanna Marie Ward

This is a waltz that I composed. This would now be my third waltz in order of composition, but there is something special about this waltz. It isn't in Ternary form, like a traditional waltz would be. Instead, it is in Sonata Form. So I am crossing the Waltz with the Sonata, thus the title of "Valse Quasi una Sonata". And as the title implies, I am writing it more like a waltz than a piano sonata.

♩ = 100

Measures 1-11 of the musical score. The piece is in 3/4 time with a key signature of one flat (B-flat). The tempo is marked as quarter note = 100. The score features a piano (p) introduction, followed by a crescendo to mezzo-forte (mf), then mezzo-piano (mp), and finally a forte (f) section. The melody is in the right hand, and the bass line is in the left hand, consisting of chords and single notes.

12

Measures 12-20 of the musical score. The melody continues in the right hand, featuring a forte (f) section. The bass line continues with chords and single notes.

21

Measures 21-27 of the musical score. The melody continues in the right hand, featuring a mezzo-forte (mf) section. The bass line continues with chords and single notes.

28

Measures 28-35 of the musical score. The melody continues in the right hand, featuring a forte (f) section. The bass line continues with chords and single notes.

37

tr tr tr

46

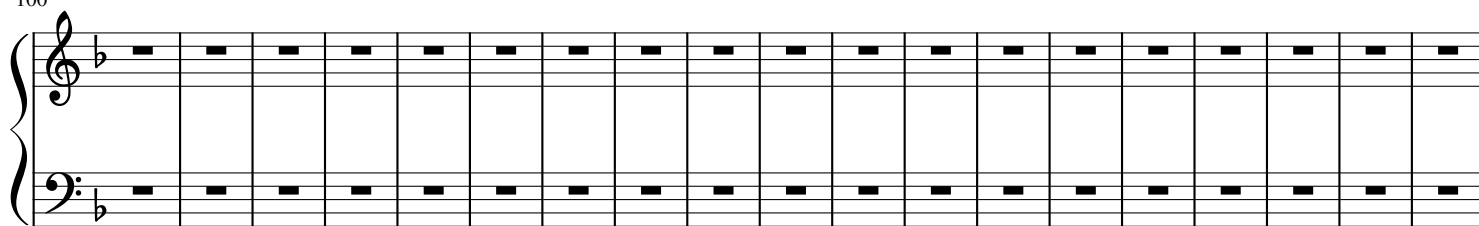
50

1.

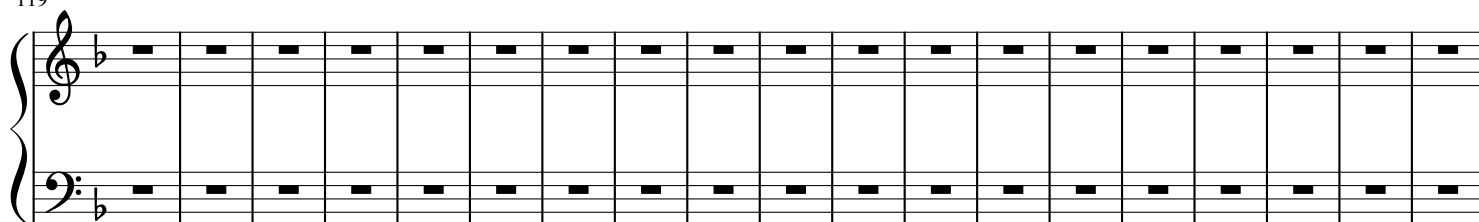
62

81

100



119



138

